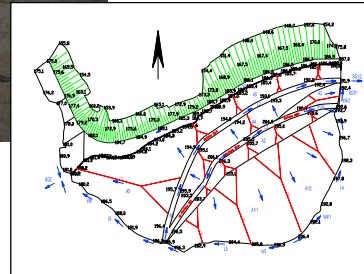


Landfill of Freyburg-Zeuchfeld



Project Description:

Landfill for domestic waste of 11 ha size located in the open pit mine, engineering consulting of the operational phase until 2005/2009, coordination and consulting during the shutdown process

HPC Performance:

- Pre-planning of the continuation of the landfill and of termination,
- Dumping planning
- Expertise on the stability of the supporting dam, static calculations on internal and external stability, construction consulting,
- engineering consulting for landfill development, determination of reductions and time-depending discontinuation for containment and follow-up care
- Conceptional design and coordination of approval permits for continued operation until 2009, shutdown and follow-up control
- Proof of the efficiency of the surface sealing system

Client Benefit:

- Comprehensive project consulting
- Planning and construction supervision out of one hand, i.e. quick information flow without loss of information
- Professional mining knowledge

Project Name:

Landfill of Freyburg/Zeuchfeld

Country:

Germany, Saxony-Anhalt

Project Location:

Freyburg/Zeuchfeld

Client:

Zweckverband Abfallwirtschaft Sachsen-Anhalt-Süd (Waste Management Association)

Contact:

Ms. Schulze

Purpose:

Consulting for the shutdown process of the landfill

Project Volume:

120 000 EURO

Project Duration:

2000 - ongoing

Field of Service:

Mining remediation/landfill technology

Project Data:

- Landfill for domestic waste
- 11 ha, 160,000 t/a